



## E- Handbook

On

Support Schemes/ Agencies for the Entrepreneurs in

Food/Agri Processing Sector

*“Without food, we cannot survive, and that is why issues that affect the food industry are so important”*

**GOVERNMENT OF INDIA  
MINISTRY OF MICRO, SMALL, MEDIUM ENTERPRISE  
MSME-DEVELOPMENT INSTITUTE  
AYYANTHOLE P:O, THRISSUR-680003  
TEL: 0487-2360216; 2360536,  
Email - [dcdi-thrissur@dcmsme.gov.in](mailto:dcdi-thrissur@dcmsme.gov.in)**

## **OVERVIEW OF INDIAN FOOD PROCESSING SECTOR**

With India moving from a position of scarcity to surplus in terms of food production, the opportunities for increasing food processing levels are innumerable. India's food processing sector, in recent years, has been known for its high-growth and high-profits, thus, increasing its contribution to the world food trade every year.

Currently, India is processing less than 10 % of its agricultural output, thus, presenting immense opportunities for increasing these processing levels and leading to investments in this sector. With agriculture and its allied sectors being the largest source of livelihoods in India, 70 % of its rural households still depend primarily on agriculture for their livelihood. Thus, this sector provides a huge employment generation potential as well. The food processing sector has been acknowledged as a high priority industry by the government of India and is currently being promoted with various fiscal reliefs and incentives.

Food & Agro Based enterprises originate from post-harvest processing of Agricultural produce. These includes the commercial apiculture, animal husbandry or poultry husbandry, the commercial processing of field crops e.g. cereals, pulses and millets, tobacco, fruits, vegetables, flowers or any combination thereof, and includes the processing, drying, storage, and marketing.

Food processing sector has emerged both, domestically and globally as well as a thrust area. India, located in the southern peninsula of the Asian continent, is the largest country in South Asia and seventh largest in the world. It has a land area of 3.29 million square km with the population of about 1.3 billion is the 2nd populous nation in the world. Out of a 3.29 million square kilometres, land is available for crop agriculture of about 182 million hectares. Approximately 72 percent (128 million hectares) of the cultivated area is under food crops. Major area under principal crops constitutes about 42 million hectares of Rice, 23.1 Wheat, 5.78 maize, 5.65 gram, and 22.56 million hectares of Pulses amongst other crops.

## SECTOR RANKING

**Ranked 2<sup>nd</sup>**  
globally in food production

**Ranked 1<sup>st</sup>**  
in spice production in  
the world

**Ranked 2<sup>nd</sup>**  
in world production of fish  
as well as in aquaculture

**Ranked 1<sup>st</sup>**  
in milk production in the world

**Ranked 2<sup>nd</sup>**  
in production of fruits and  
vegetables

**Ranked 1<sup>st</sup>**  
in livestock population

India produces a very wide variety of fruits & and is the 2nd largest producer in the world. But less than 2 percent of this production is commercially processed. The produce is perishable and seasonal and is often wasted due to inadequate handling, transportation and storage. Therefore, there is huge potential for food & agro processing enterprises.

Production agriculture and post-production processing are two aspects of sustainable agricultural production. Due to technological interventions, effective input management, and government policies and supports, Indian agriculture has been growing.

Reducing post-harvest losses will enhance the availability of foods for local consumption. This is further important in view of COVID-19 pandemic. According to ICAR, reducing post-harvest losses further will enhance the availability of foods for consumption.

**MATRIX OF SCHEMES OF GOVERNMENT OF INDIA FOR EACH COMPONENT OF POST HARVEST  
MANAGEMENT OF FARM PRODUCE- WITH THE ENTREPRENEURS PERSPECTIVE**

Sl No	Component	<a href="#">M/o MSME</a>	<a href="#">M/o FPI</a>	<a href="#">M/o Agriculture</a>	<a href="#">M/o Commerce &amp; Industry (APEDA)</a>
1	Sorting / Grading At Farm Level		<a href="#">Integrated Cold Chain and Value Addition Infrastructure</a>  <a href="#">Agro Processing Cluster Scheme</a>  <a href="#">Scheme for Creation of Backward and Forward Linkages</a>  <a href="#">Operation Green</a>  <a href="#">PMFME</a>	<a href="#">Agricultural Marketing Infrastructure</a>  <a href="#">Agri-clinics &amp; Agri Business Centres (ACABC)</a>  <a href="#">AGRIINFRA</a>	<a href="#">Development of Export Infrastructure</a>
2	PreProcessing Before Transportation		<a href="#">Integrated Cold Chain &amp; value addition infrastructure</a>  <a href="#">Operation Green</a>	<a href="#">AMI</a>  <a href="#">ACABC</a>	<a href="#">Development of Export Infrastructure</a>

				<a href="#">Integrated Post Harvest management under MIDH</a> <a href="#">AGRIINFRA</a>	
3	Intermittent Storage at Farm Level.		<a href="#">Integrated Cold Chain &amp; value addition infrastructure</a>	<a href="#">AMI</a> <a href="#">AGRIINFRA</a>	
4	Packaging At Farm Level		<a href="#">Integrated Cold Chain and Value Addition Infrastructure</a>	<a href="#">AMI</a> <a href="#">ACABC</a> <a href="#">Integrated Post Harvest management under MIDH</a> <a href="#">AGRIINFRA</a>	
5	Transportation To Whole Sale/Retail Market		<a href="#">Integrated Cold Chain &amp; value addition infrastructure</a> <a href="#">Operation Green</a> <a href="#">ENAM</a>	<a href="#">Integrated Post Harvest management under MIDH</a> <a href="#">AGRIINFRA</a> <a href="#">Development of Commercial Horticulture through</a>	<a href="#">Development of Export Infrastructure</a>

				<a href="#">Production and Post-Harvest Management (PHM) of Horticulture Crops</a>	
6	Storage (Long Term, Short Term, Controlled Atmosphere Storage)	<a href="#">SFURTI</a>	<a href="#">Mega Food Park</a>  <a href="#">Integrated Cold Chain &amp; value addition infrastructure</a>  <a href="#">PMFME</a>	<a href="#">AMI</a>  <a href="#">ACABC</a>  <a href="#">National Horticultural Board (NHB)</a>  <a href="#">Scheme for Cold Storage under MIDH</a>  <a href="#">AGRIINFRA</a>  <a href="#">Development of Commercial Horticulture through Production and Post-Harvest Management (PHM) of Horticulture Crops</a>	
7	Processing Into Food And Agro Products	<a href="#">MSE-CDP</a> <a href="#">PMEGP</a> <a href="#">CGTMSE</a>	<a href="#">Agro Processing Cluster</a>	<a href="#">ACABC</a>	<a href="#">Development of Export Infrastructure</a>

		<a href="#">SFURTI</a> <a href="#">Honey Mission</a>	<a href="#">PMFME</a> <a href="#">CEFPPC</a>	<a href="#">Venture Capital Assistance</a> <a href="#">National Honey Bee Mission</a> <a href="#">AGRIINFRA</a>	
8	Packaging	<a href="#">PMEGP</a> <a href="#">PMS</a>	<a href="#">PMFME</a>	<a href="#">AMI</a> <a href="#">ACABC</a> <a href="#">AGRIINFRA</a>	
9	Marketing	<a href="#">PMS</a> <a href="#">PPP</a>	<a href="#">PMFME</a>	<a href="#">National Agriculture Market (e NAM)</a> <a href="#">ACABC</a> <a href="#">AGRIINFRA</a>	<a href="#">Development of Export Infrastructure</a> <a href="#">Market intelligence</a>
10	Quality	<a href="#">MSE-CDP</a>	<a href="#">PMFME</a>	<a href="#">AGMARK</a> <a href="#">AMI</a>	<a href="#">Quality Development</a> <a href="#">MPEDA</a>

## MAJOR SCHEMES OF MINISTRY OF MICRO SMALL MEDIUM ENTERPRISES

### 1) Prime Minister Employment Generation Programme (PMEGP)

Description	The scheme is implemented by Khadi and Village Industries Commission (KVIC) functioning as the nodal agency at the national level. At the state level, the scheme is implemented through State KVIC Directorates, State Khadi and Village Industries Boards (KVIBs), District Industries Centres (DICs) and banks. In such cases KVIC routes government subsidy through designated banks for eventual disbursement to the beneficiaries / entrepreneurs directly into their bank accounts.
Nature of assistance	The maximum cost of the project/unit admissible in manufacturing sector is ₹ 25 lakhs and in the business/service sector, it is ₹ 10 lakhs. Categories of Beneficiary's Rate of subsidy under PMEGP (of project cost) Area (location of project/unit) General category 15%(Urban), 25%(Rural), Special 25%(Urban), 35%(Rural) (including SC/ ST/ OBC/ Minorities/Women, Ex-servicemen, Physically handicapped, NER, Hill and Border areas, etc.) The balance amount of the total project cost will be provided by the banks in the form of term loan and working capital.
Who can apply?	Any individual, above 18 years of age. At least VIII standard pass for projects costing above Rs.10 lakh in the manufacturing sector and above Rs. 5 lakh in the business / service sector. Only new projects are considered for sanction under PMEGP. Self Help Groups (including those belonging to BPL provided that they have not availed benefits under any other Scheme), Institutions registered under Societies Registration Act, 1860; Production Co-operative Societies, and Charitable Trusts are also eligible.
Apply Online	<a href="https://www.kviconline.gov.in/pmegportal/pmegphome/">https://www.kviconline.gov.in/pmegportal/pmegphome/</a>
Detailed Guidelines	<a href="#">New PMEGP guidelines.pdf (kvic.gov.in)</a>

## 2) Credit Guarantee Scheme for Micro & Small Enterprises (CGTMSE)

### SALIENT FEATURES



For more details visit- <https://www.cgtmse.in/>

## 3) Scheme of Fund for Regeneration of Traditional Industries (SFURTI)

- ✓ Support to traditional artisans to provide sustainable employment
- ✓ Government of India support up to Rs. 2.5 cr. up to 500 artisans and Rs. 5 cr. for more than 500 artisans
- ✓ Set up physical infrastructure with CFCs, latest machines, training, etc. in clusters.

Scheme applicable for- Existing artisans from traditional industries

Food and agro based clusters like Jaggery, Honey, Sweet meat, Papad, Bakery, Bamboo Pickle, Tea, Mushroom, Mango Pickles, Fruit Jam, Jack Fruit

Chips, Banana Chips, Banana Leaves Cup/ Plate, Dried fish etc. have potential to be promoted under SFURTI.

For more details visit- <https://sfurti.msme.gov.in/SFURTI/Home.aspx>

4) Micro & Small Enterprises Cluster Development Programme (MSE – CDP)

- ✓ Creation of Common Facility Centers including Plug & Play Facilities
- ✓ Thematic Interventions- Activities such as Training Programmes, Exposure Visits

Scheme applicable for- Existing Entrepreneurs (in form of a SPV)

*Detailed Information*

*Common Facility Centers:* Creation of “tangible assets” such as Common Production/Processing Centre, Design Centers, Testing Facilities including Plug & Play Facilities. GoI Assistance: upto 90% of the maximum Project cost of Rs. 20 crore

*Infrastructure Development:* Development of land, roads, drainage, power distribution etc. in new / existing industrial (multi-product) areas / estates / Flatted Factory Complex. GoI Assistance: upto 80% of the maximum Project cost of Rs. 15 crore

*Marketing Hubs / Exhibition Centres by Associations:* Establishing Marketing Hubs/Exhibition Centres at central places for display and sale of products. GoI Assistance: upto 80% of the maximum Project cost of Rs. 10 crore

*Thematic Interventions:* Activities such as Training Programmes, Exposure Visits, BDS provisioning etc. for approved/ completed CFCs. GoI Assistance: Rs.2.00 lakh for each activity, maximum Rs.10 lakh per CFC

*State Innovative Cluster Development Programme:* Co-funding of the CFC projects of State Cluster Development Programme on matching share

basis. GoI Assistance: GoI fund would be limited to State Government share or Rs.5.00 crore whichever is lower.

Food and agro based clusters like Cashew Processing, Raisin, Rice Mil, Dal Mil, Edible Oil, Spice Processing, Sea Food Processing, Fruit & Vegetable Processing, Jaggery Manufacturing, Mint Processing, Papad, Bakery, Tea etc. could be promoted under MSE-CDP.

For details - <https://cluster.dcmsme.gov.in/>

#### 5) Procurement and Marketing Support (PMS)

- ✓ Participation of Individual MSEs in domestic Trade Fair/ Exhibition
- ✓ Capacity building of MSMEs in Modern Packaging Technique / Development of Marketing Haats.
- ✓ Organizing Domestic Trade Fair& Exhibition/ Vendor Development Programs/ National & International Workshops & Seminars/ Awareness programs

Scheme applicable for - Existing Entrepreneurs

For details- [http://dcmsme.gov.in/Guidelines\\_PMS.pdf](http://dcmsme.gov.in/Guidelines_PMS.pdf)

#### 6) Public Procurement Policy 2018

- ✓ The Public Procurement Policy mandates 25% annual procurement from MSEs by Central Ministries /Departments/Public Sector Enterprises (CPSEs).
- ✓ Public Procurement Policy is meant for procurement of only goods produced and services rendered by MSEs and works contract is not covered under the purview of Public Procurement Policy.
- ✓ Tender set free of cost
- ✓ Exemption from the payment of Earnest Money
- ✓ In tender, participating MSEs quoting price within price band of L1+15% shall also be allowed to supply a portion of requirement by bringing down their price to L1 price in a situation where price is from someone other than an MSE and such MSE shall be allowed to supply upto 25% of the total tendered value.
- ✓ 358 items reserved for exclusive procurement from MSEs.

- ✓ The MSEs may also be given exemption in prior experience and turnover clauses.

For more details- <http://dcmsme.gov.in/pppm.htm.aspx>

#### 7) Honey Mission under KVIC

Under Honey Mission program, bee colonies have been to be distributed to the 10, 200 beneficiaries (10 Bee hives & Bee colonies to each beneficiary). Apart from that support activities for bee keeping i.e. Skill Development Training on bee keeping by Master trainer are provided.

Create an end-to-end implementation framework for beekeeping skill development, which provides employment opportunities and income generation to agriculturists, beekeepers rural & urban unemployed youth. Enforce nationally acceptable standards of Good Beekeeping Practices (GPB) in the country

For more detail please follow the link given below-  
[https://www.kviconline.gov.in/honeymission/images/HM\\_Guideline.pdf](https://www.kviconline.gov.in/honeymission/images/HM_Guideline.pdf)

## MAJOR SCHEMES OF MINISTRY OF FOOD PROCESSING INDUSTRIES

### 1) Pradhan Mantri Kisan Sampada Yojana

The objective of PMKSY is to supplement agriculture, modernize processing and decrease Agri-Waste.

Components of PMKSY



- ✓ Mega Food Parks- <https://mofpi.nic.in/Schemes/mega-food-parks>
- ✓ Integrated Cold Chain and Value Addition Infrastructure- <https://mofpi.nic.in/Schemes/cold-chain>
- ✓ Creation/ Expansion of Food Processing/ Preservation Capacities (Unit Scheme)- <https://mofpi.nic.in/Schemes/creation-expansion-food-processing-preservation-capacities-unit-scheme>
- ✓ Infrastructure for Agro-processing Clusters- <https://mofpi.nic.in/Schemes/agro-processing-cluster>
- ✓ Creation of Backward and Forward Linkages- <https://mofpi.nic.in/Schemes/scheme-creation-backward-and-forward-linkages>
- ✓ Food Safety and Quality Assurance Infrastructure- <https://mofpi.nic.in/Schemes/food-safety-quality-assurance-infrastructure>
- ✓ Human Resources and Institutions- <https://mofpi.nic.in/Schemes/human-resources-and-institutions>

✓ Operation Greens- <https://mofpi.nic.in/Schemes/operation-greens>

For more details- [https://mofpi.nic.in/sites/default/files/important\\_notice-sampada-19.05.2017.pdf](https://mofpi.nic.in/sites/default/files/important_notice-sampada-19.05.2017.pdf)

## 2) PM Formalisation of Micro Food Processing Enterprises Scheme (PMFME Scheme) under Aatmnirbhar Bharat Yojna

The scheme has a special focus on supporting Groups engaged in Agri-food processing such as Farmer Producer Organizations (FPOs), Self Help Groups (SHGs) and Producers Cooperatives along their entire value chain. The PMFME scheme support in terms of:

- i. Food processing entrepreneurs through credit-linked capital subsidy @35% of the eligible project cost with a maximum ceiling of Rs.10 lakh per unit.
- ii. Seed capital @ Rs. 40,000/- per SHG member for working capital and purchase of small tools.
- iii. Credit linked grant of 35% for capital investment to FPOs/ SHGs/ producer cooperatives.
- iv. Support for marketing & branding to micro-units.
- v. Support for common infrastructure and handholding support to SHGs, FPOs and Producer Cooperatives.
- vi. Providing Capacity building and training support to increase the capabilities of the enterprises and upgradation of skills of workers.



For more details- <https://mofpi.nic.in/pmfme/>

## MAJOR SCHEMES OF MINISTRY OF AGRICULTURE

1) Integrated Scheme for Agricultural Marketing- This scheme has 5 components with overall budgetary allocation of Rs.4548 crores during the XII Plan. Components of the scheme are as follows:

*Agricultural Marketing Infrastructure (AMI)* - This scheme works on Promotion of Common Facilitation Centre by Farmer Producer Organizations (FPOs) / Farmer Producer Companies (FPCs).

The Scheme was valid upto 30/06/2021 and likely to continue

For more details- [https://dmi.gov.in/Documents/AMI\\_OG\\_Scheme.pdf](https://dmi.gov.in/Documents/AMI_OG_Scheme.pdf) ;

*Agribusiness Development through Venture Capital Assistance and Project Development Facility (VCA)*- Venture Capital Assistance is financial support in the form of an interest free loan provided by SFAC to qualifying projects to meet shortfall in the capital requirement for implementation of the project.

For more details- [http://sfacindia.com/VCA\\_Scheme.aspx](http://sfacindia.com/VCA_Scheme.aspx)

*National Agriculture Market (eNAM)* is a pan-India electronic trading portal which networks the existing APMC mandis to create a unified national market for agricultural commodities. Small Farmers Agribusiness Consortium (SFAC) is the lead agency for implementing eNAM under the aegis of Ministry of Agriculture and Farmers' Welfare, Government of India. For more detail contact- <http://sfacindia.com/Nam.aspx>

*Strengthening of AGMARK Grading Facilities (SAGF)-*

- To help farmers get better and remunerative prices by grading of their produce.
- To frame grade standards of agricultural commodities as per the provisions in Agricultural Produce ( Grading and Marking ) Act,1937., revise and harmonized with international standards such as Codex & ISO and standards framed by Bureau of Indian Standards (BIS).

Certification for Domestic Market & Exports- Certificate of Authorisation for AGMARK certification to agencies having own laboratory or have access to an approved State Grading Laboratory or Commercial Laboratory approved by the DMI for grading and marking of the commodities

Nodal authority for certification of AGMARK: Directorate of Marketing & Inspection (DMI), Department of Agriculture & Cooperation, Ministry of Agriculture For more detail, please click on the following link: <http://agricoop.nic.in/programmes-schemes-listing>

*Mission For Integrated Development Of Horticulture (MIDH)* - Mission for Integrated Development of Horticulture (MIDH) is a Centrally Sponsored Scheme for the holistic growth of the horticulture sector covering fruits, vegetables, root & tuber crops, mushrooms, spices, flowers, aromatic plants, coconut, cashew, cocoa and bamboo. Under MIDH, Government of India (GOI) contributes 60%, of total outlay for developmental programmes in all the states except states in North East and Himalayas, 40% share is contributed by State Governments. In the case of North Eastern States and Himalayan States, GOI contributes 90%. In case of National Horticulture Board (NHB), Coconut Development Board (CDB), Central Institute for Horticulture (CIH), Nagaland and the National Level Agencies (NLA), GOI contributes 100%. MIDH also provides technical advice and administrative support to State Governments/ State

Horticulture Missions (SHMs) for the Saffron Mission and other horticulture related activities Rashtriya Krishi Vikas Yojana (RKVY)/NMSA. For more details- <https://midh.gov.in/midhSchemes.html>

For more details- <https://mofpi.nic.in/sites/default/files/ISAM%20-GuidelinesXII-Plan.pdf>

## 2) Agri Clinics And Agri-Business Centres (ACABC) Scheme

To create gainful self-employment opportunities to unemployed agricultural graduates, agricultural diploma holders, intermediate in agriculture and biological science graduates with PG in agri-related courses.

Agri-Clinics- Agri-Clinics are envisaged to provide expert advice and services to farmers on various aspects to enhance productivity of crops/animals and increase the incomes of farmers. Agri-Clinics provide support in the following areas:

- ✓ Soil health
- ✓ Cropping practices
- ✓ Plant protection
- ✓ Crop insurance, Post-harvest technology, Clinical services for animals, feed and fodder management Prices of various crops in the market, etc.

### Agri-Business Centres

Agri-Business Centres are commercial units of agri-ventures established by trained agriculture professionals. These ventures may include maintenance and custom hiring of farm equipment, sale of inputs and other services in agriculture and allied areas, including post-harvest management and market linkages for income generation and entrepreneurship development.

The scheme covers full financial support for training and handholding, provision of loan and credit-linked back-end composite subsidy.

For more details- <http://www.agriclinics.net/>

## 3) National Beekeeping & Honey Mission (NBHM)

Govt. of India has approved a new Central Sector Scheme entitled “National Beekeeping & Honey Mission (NBHM)” for 2 years for overall promotion and development of scientific beekeeping in mission mode to achieve the goal of “Sweet Revolution” in the country by giving thrust on capacity building &

trainings, specific focus on women, input support for promotion & production, setting up of Integrated Beekeeping Development Centres (IBDCs), other Infrastructures, Digitization /online registration, etc., processing, value addition, market support, etc. & R&D under 3 Mini Missions .

For more details- <https://nbb.gov.in/Archive/Guidelines.pdf>

#### 4) Agriculture Infrastructure Fund

The scheme has been launched recently, provides a medium - long term debt financing facility for investment in viable projects for post-harvest management Infrastructure and community farming assets through interest subvention and financial support. The main objective of the AIF is to attract investment in post-harvest infrastructure which has been a weak link in the agricultural supply chain

All loans under this financing facility will have interest subvention of 3% per annum up to a limit of Rs. 2 crore. This subvention will be available for a maximum period of seven years. Further, credit guarantee coverage will be available for eligible borrowers from this financing facility under Credit Guarantee Fund Trust for Micro and Small Enterprises (CGTMSE) scheme for a loan up to Rs. 2 crore. The fee for this coverage will be paid by the Government. In case of FPOs the credit guarantee may be availed from the facility created under FPO promotion scheme of Department of Agriculture, Cooperation & Farmers Welfare (DACFW).

For more details- <https://agriinfra.dac.gov.in/>

#### 5) SCHEMES OF NATIONAL HORTICULTURE BOARD

A) Capital Investment subsidy scheme for construction/expansion/modernization of cold storage and storages for Horticulture Produce-

Description of components and Pattern of Assistance

Components - Credit linked projects relating to Cold Storages including Controlled Atmosphere (CA) and Modified Atmosphere (MA) Stores, pre-cooling units, other Storages for onion, etc., their modernization are eligible for assistance under this component.

Pattern of Assistance: The assistance will be as credit linked back-ended subsidy @ 40% of the capital cost of project in general areas and 55% in case of Hilly & Scheduled Areas for a maximum storage capacity of 5000 MT per project

For more details- <http://nhb.gov.in/schemes/capital-investment-subsidy.html>

B) Development of Commercial Horticulture through Production and Post-Harvest Management (PHM) of Horticulture Crops - To improve integrated development of Horticulture industry and to help in coordinating, sustaining the production and processing of fruits and vegetables

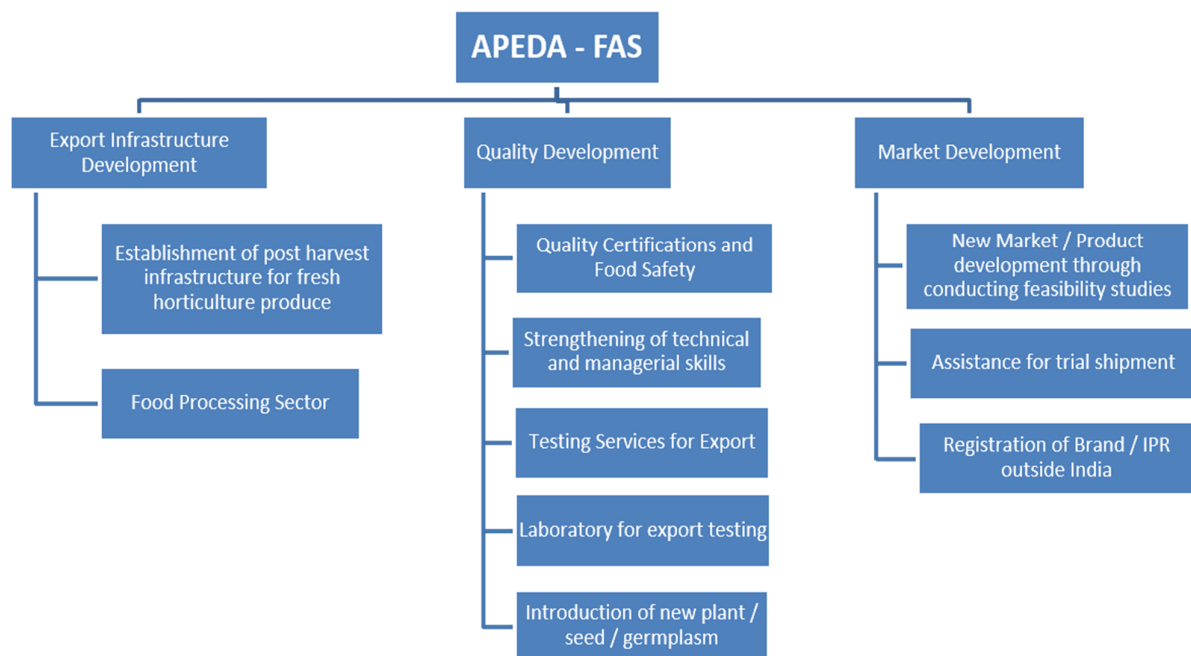
Components:

- ✓ Commercial Horticulture Development
  - In open field cultivation- <http://nhb.gov.in/guideline/111.pdf>
  - In protected cover cultivation- <http://nhb.gov.in/guideline/112.pdf>
- ✓ Integrated Post Harvest Management projects- <http://nhb.gov.in/guideline/113.pdf>

For more details

[http://nhb.gov.in/online\\_application\\_nhb\\_scheme\\_2020\\_21.aspx?enc=3ZOO8K5CzcdC/Yq6HcdIxfgWqd9Zpsh5GgGF2IJ/Sbjhzna+ksD2hsqVFnQhiDh#](http://nhb.gov.in/online_application_nhb_scheme_2020_21.aspx?enc=3ZOO8K5CzcdC/Yq6HcdIxfgWqd9Zpsh5GgGF2IJ/Sbjhzna+ksD2hsqVFnQhiDh#)

## MAJOR SCHEMES OF AGRICULTURAL AND PROCESSED FOOD PRODUCTS EXPORT DEVELOPMENT AUTHORITY (APEDA)



1) Infrastructure Development –

For more details- [https://apeda.gov.in/apedawebsite/trade\\_promotion/Scheme-Component-for-Infrastructure-Development.htm](https://apeda.gov.in/apedawebsite/trade_promotion/Scheme-Component-for-Infrastructure-Development.htm)

2) QUALITY DEVELOPMENT

For more details- [https://apeda.gov.in/apedawebsite/trade\\_promotion/Quality\\_Development1.htm](https://apeda.gov.in/apedawebsite/trade_promotion/Quality_Development1.htm)

3) Market Intelligence for Food & Agriculture Export

Market Intelligence bulletin are published by AEDA regularly. It covers latest market intelligence and analytical inputs gathered by APEDA from various reputed sources. The information is meant for consumption among stakeholders of Agri and Processed Food Exports from India.

For more detail please click on the following link:  
[http://agriexchange.apeda.gov.in/Weekly\\_eReport/index.html](http://agriexchange.apeda.gov.in/Weekly_eReport/index.html)

## **REGULATORY BODIES (FOR QUALITY STANDARDS)**

There are two types of category of Standards.

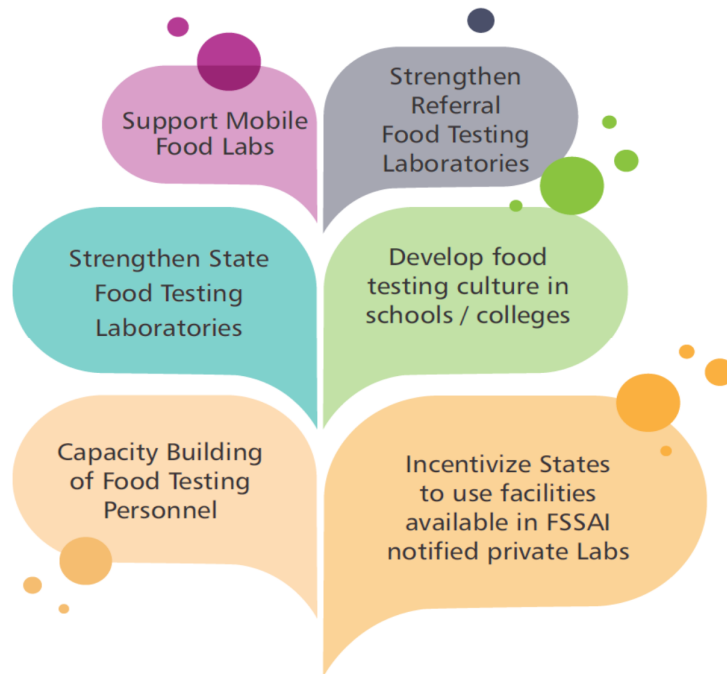
- i. Quality Standards
- ii. Legal Standards.

Moreover, we have many bodies enforcing standards. This led to lot of confusion for both manufacturers as well as enforcers. In the case of agro & food products, barriers to trade norms have been raised. For uniformity in food standards, FSSAI has been created for laying down science based standards for articles of food and to regulate their manufacture, storage, distribution, sale and import to ensure availability of safe and wholesome food for human consumption. Apart from FSSAI, we have AGMARK certification which represents the Product quality/ grade. BIS has also formed standards on food items, few of them are mandatory.

### 1) The Food Safety and Standards Authority of India (FSSAI)

FSSAI under Ministry of Health & Family Welfare, Government of India, consolidates various acts & orders that have hitherto handled food related issues in various Ministries and Departments. FSSAI has been created for laying down science based standards for articles of food and to regulate their manufacture, storage, distribution, sale and import to ensure availability of safe and wholesome food for human consumption. FSSAI offers a food license to all food business operators (FBO) in India. All the FBOs must follow all the rules and regulations of FSSAI for food quality control.

Strengthening of Food Testing System SoFTeL: 6 components of the scheme are as given below:



For more details- <https://archive.fssai.gov.in/dam/jcr:645f5c7a-ff7b-4864-9637-7a852789fe3b/softel-booklet.pdf>

## 2) AGMARK Certification

AGMARK is a certification mark for agricultural produce, assuring that they conform to a grade standard notified by Directorate of Marketing & Inspection (DMI), Department of Agriculture, Cooperation and Farmers Welfare, Ministry of Agriculture & Farmers Welfare.

While the certification scheme is essentially voluntary, Food Safety and Standards (Prohibition and Restriction on Sale) Regulations 2011 have prescribed mandatory certification under AGMARK for certain products viz. Blended Edible Vegetable Oil, Fat Spread. In case of Til Oil, Carbia Callosa, Honey dew, Tea and Ghee. FSSAI has prescribed few conditional restrictions.

The certification scheme is implemented through 11 Regional Offices, 26 Sub offices, 11 Regional Agmark Laboratories and Central Agmark Laboratory (Apex laboratory) of the Directorate. Out of twelve laboratories, 09 laboratories are accredited with the National Accreditation Board for testing and Calibration Laboratories (NABL) as per the International Standard ISO17025. Persons desirous of grading and certifying a notified agricultural commodity under Agmark can apply to the nearest field office of the DMI.

The details are available at [www.dmi.gov.in](http://www.dmi.gov.in) portal under AGMARK icon.

### 3) BIS Certification

BIS grants licenses to manufacturers covering practically every industrial discipline from agriculture and textiles to electronics. BIS is functioning under the administrative control of Ministry of Consumer Affairs, Food & Public Distribution. The certification allows the licensees to use the popular ISI mark, which has become synonymous with quality products for the Indian and neighbouring markets for over 55 years.

In this connection, the Food Safety and Standards (Prohibition and Restriction on Sales) Regulations, 2011 has prescribed mandatory certification under the BIS Act for the following products:

- Infant formula (IS14433)
- Milk cereal based weaning food (IS1656)
- Processed cereal based weaning food (IS11536)
- Follow up formula – Complementary Foods(IS15757)
- Packaged drinking water (IS14543)
- Packaged mineral water (IS13428)
- Milk Powder (IS1165)
- Skimmed Milk Powder (IS13334)
- Partly Skimmed Milk Powder(IS14542)
- Condensed Milk, Partly Skimmed and Skimmed Condensed Milk(IS1166)

For more details-

[https://bis.gov.in/wp-content/uploads/2019/05/GoLGuidelines\\_01052019.pdf](https://bis.gov.in/wp-content/uploads/2019/05/GoLGuidelines_01052019.pdf)

4) The Marine Products Export Development Authority (MPEDA)- MPEDA is the nodal agency for the holistic development of seafood industry in India to realise its full export potential as a nodal agency. Based on the recommendations of MPEDA, Government of India notified new standards for fishing vessels, storage premises, processing plants and conveyances.

MPEDA's focus is mainly on Market Promotion, Capture Fisheries, Culture Fisheries, Processing Infrastructure & Value addition, Quality Control, Research and Development.

For more details visit- <https://mpeda.gov.in/>

- 5) Export Inspection Council (EIC)- Export Inspection Council of India (EIC) is an advisory body of Central Government for development of export trade through quality control and pre-shipment inspection.

For more details visit- <http://www.eicindia.org/>

- 6) Directorate of Plant Protection, Quarantine & Storage

- a) Inspection of imported agricultural commodities for preventing the introduction of exotic pests and diseases inimical to Indian fauna and flora through implementation of DIP Act, 1914 and the Plant Quarantine (Regulation of Import into India) Order, 2003 issued there under.

- b) Inspection of plants and plant material meant for export as per the requirements under International Plant Protection Convention (IPPC) 1951 of FAO to facilitate pest free trade.

- c) Detection of exotic pests and diseases for their containment by adopting domestic quarantine regulations, if introduced.

For more details visit- <http://ppqs.gov.in/>

## Important Contacts

Sl.No	Particulars	Link
1	Ministry of Food Processing Industries	<a href="https://mofpi.nic.in/">https://mofpi.nic.in/</a>
2	Ministry of MSME	<a href="https://msme.gov.in/">https://msme.gov.in/</a>
3	Ministry of Agriculture	<a href="https://agricoop.nic.in/en">https://agricoop.nic.in/en</a>
4	Department of Agriculture	<a href="http://keralaagriculture.gov.in/">http://keralaagriculture.gov.in/</a>
5	Farm Information Bureau	<a href="http://fibkerala.gov.in/">http://fibkerala.gov.in/</a>
6	Kerala Agricultural University	<a href="http://www.kau.in/">http://www.kau.in/</a>
7	Agency for Development of Aquaculture (ADAK) , Thiruvananthapuram	<a href="http://www.fisheries.kerala.gov.in/">http://www.fisheries.kerala.gov.in/</a>
8	Karshika Keralam	<a href="http://www.keralaagriculture.gov.in/">http://www.keralaagriculture.gov.in/</a>
9	Animal Husbandry	<a href="http://ahd.kerala.gov.in/">http://ahd.kerala.gov.in/</a>
10	Directorate of Arecanut and Spices Development (DASD)	<a href="http://dasd.gov.in/">http://dasd.gov.in/</a>
11	Directorate of Cashewnut & Cocoa Development (DCCD)	<a href="http://dccd.gov.in">dccd.gov.in</a>
12	Kerala Agro Industries Corporation Ltd.	<a href="http://www.keralaagro.com">www.keralaagro.com</a>
13	Kerala Agro Machinery Corporation Ltd.	<a href="http://www.kamcoindia.com">www.kamcoindia.com</a>
14	Kerala State Co-operative AGRL & Rural Development Bank	<a href="http://www.keralalandbank.org">www.keralalandbank.org</a>
15	Kerala State Co-operative Marketing Federation (Market Fed)	<a href="http://www.marketfed.com">www.marketfed.com</a>
16	Kerala State Warehousing Corporation	<a href="http://www.kerwacor.com">www.kerwacor.com</a>

17	Plantation Corporation of Kerala	<a href="http://www.pcklimited.in">www.pcklimited.in</a>
18	Small Farmers Agri Business Consortium	<a href="http://www.sfackerala.org">www.sfackerala.org</a>
19	Vegetable and Fruit Promotion Council Keralam (VFPCCK)	<a href="http://www.vfpck.org">www.vfpck.org</a>
20	Central Plantation Crops Research Institute	<a href="http://www.cpcri.gov.in">www.cpcri.gov.in</a>
21	Central Tuber Crops Research Institute	<a href="http://www.ctcri.org">www.ctcri.org</a>
22	Coconut Development Board	<a href="http://coconutboard.nic.in">coconutboard.nic.in</a>
23	Spices Board	<a href="http://www.indianspices.com">www.indianspices.com</a>
24	Market Intelligence	<a href="http://amickau.nic.in">amickau.nic.in</a>
25	Agmarknet	<a href="http://www.agmarknet.gov.in">www.agmarknet.gov.in</a>
26	NABARD	<a href="http://www.nabard.org">www.nabard.org</a>
27	Institute of Animal Health and Veterinary Biologicals	<a href="http://www.iahvb.kerala.gov.in">www.iahvb.kerala.gov.in</a>
28	MPEDA	<a href="https://mpeda.gov.in/">https://mpeda.gov.in/</a>